



THE POWDER TRAIL

WE'VE GOT THE ONLY POWDER THAT KEEPS YOU GOING 24/7

COMPANY
NEWS & UPDATES

QUARTER
PERFORMANCE

COMPANY
CULTURE



DriFlow[®]

DCS's mission is to deliver quantifiable value to our clients and shareholders through innovative technology, service, and empowered employee owners.



Fierce dedication to excellence in service



Transparency, respect, and accountability to our clients & our employee-owners



Endless pursuit of innovation and continuous improvement



Powered by a culture rooted in teamwork and safety

Table of Contents



06

STX Facility Expansion
DFX Blender Tub Mount

08

Dri Performance
Basin Breakdown

10

Liquid Chemical Performance
ESG Performance

12

AADE Clay Shoot Tournament
Fight Against Hunger in East Texas

South Texas Facility Expansion



The DCS South Texas Facility gets a major upgrade, expanding our inventory capacity to better serve our Eagle Ford basin clients.

The facility expansion in Pleasanton, TX comes after the district has seen a sixfold increase in powder consumption over the last two years. The Eagle Ford basin now makes up roughly 20% of total activity month over month. DCS pumped just under three million pounds of DriFlow in Q3.

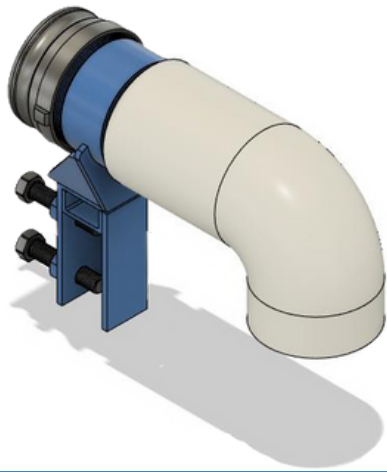
With the ramp up in activity, DCS has allocated additional field and office support to sustain the growth. The team is excited to continue providing excellent service, starting at our facilities where DriFlow product is stored and loaded.



DFX Blender Tub Mount

As DFX continues to build run-time, the team is continuously improving the unit's mechanisms and functionality to adapt to various frac spread configurations and operations. The latest DriFlow X upgrade fine tunes the seamless integration for delivering dry product to the blender tub.

The DFX tub mount fixes the discharge hose to the edge of the tub, preventing movement of the hose as the FR stream is added to the blender. With a fixed discharge point, the risk of spillage due to the hose being submerged in the tub or slipping out of the tub is eliminated.



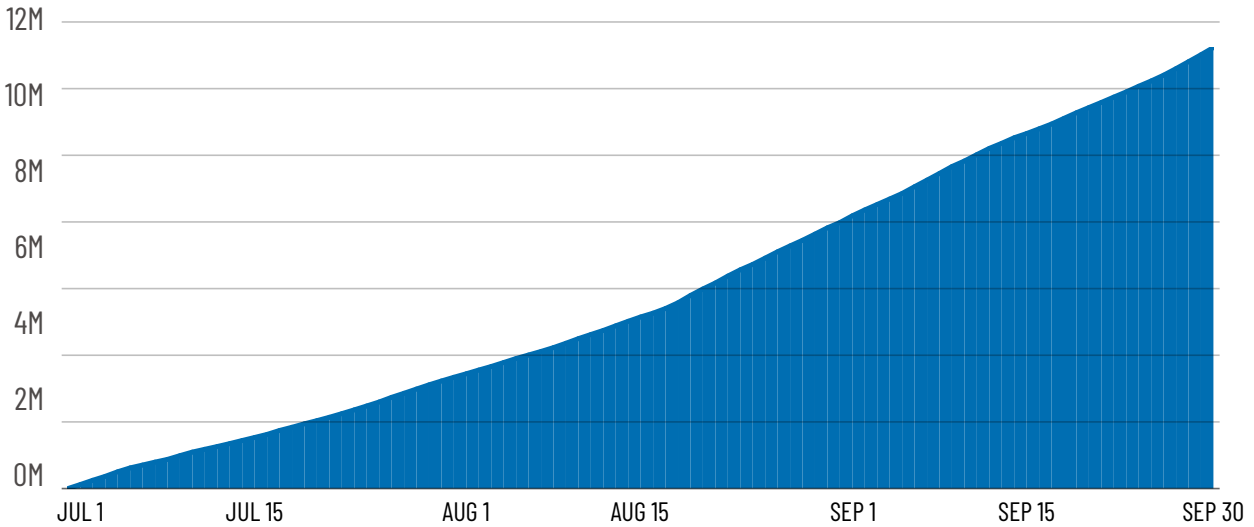
From Design to the Field:

The additional DFX component utilizes a clamp style mount with a 90 degree discharge port to ensure a clean and reliable method for FR delivery into the blender tub.



DriFlow Performance

Cumulative Powder Consumption



An increase from the previous quarter, DCS closed out Q3 with 13 million pounds of Dri products pumped while maintaining a 99.3% run-time efficiency across the fleet. DFX has likewise, experienced an uptick in activity with product pumped through the semi-autonomous units nearly doubling from last quarter. As the

new unit build program reached completion, putting fleet count at 30 total units, the engineering team is shifting gears with a focus on refurbishing legacy units with high run-time. The build and rebuild programs will ensure that the DriFlow fleet is maintained and asset health is maximized.

PRODUCT PUMPED Q3 2024

13,233,698 POUNDS

DAILY PUMPING AVERAGE

143,845 POUNDS

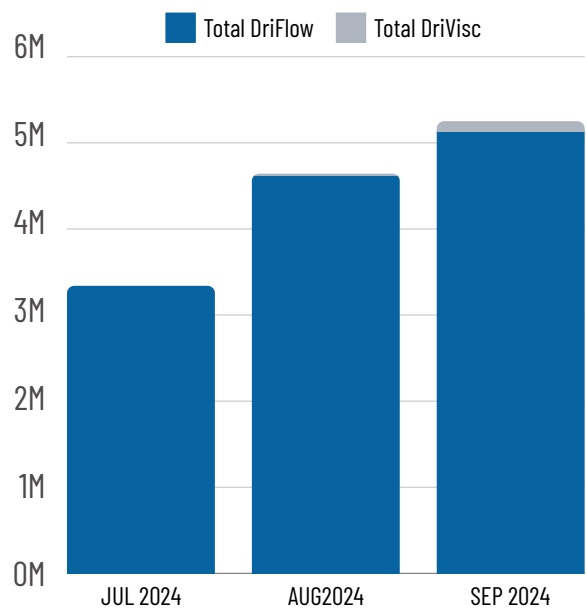
PRODUCT PUMPED BY DFX

1,067,816 POUNDS

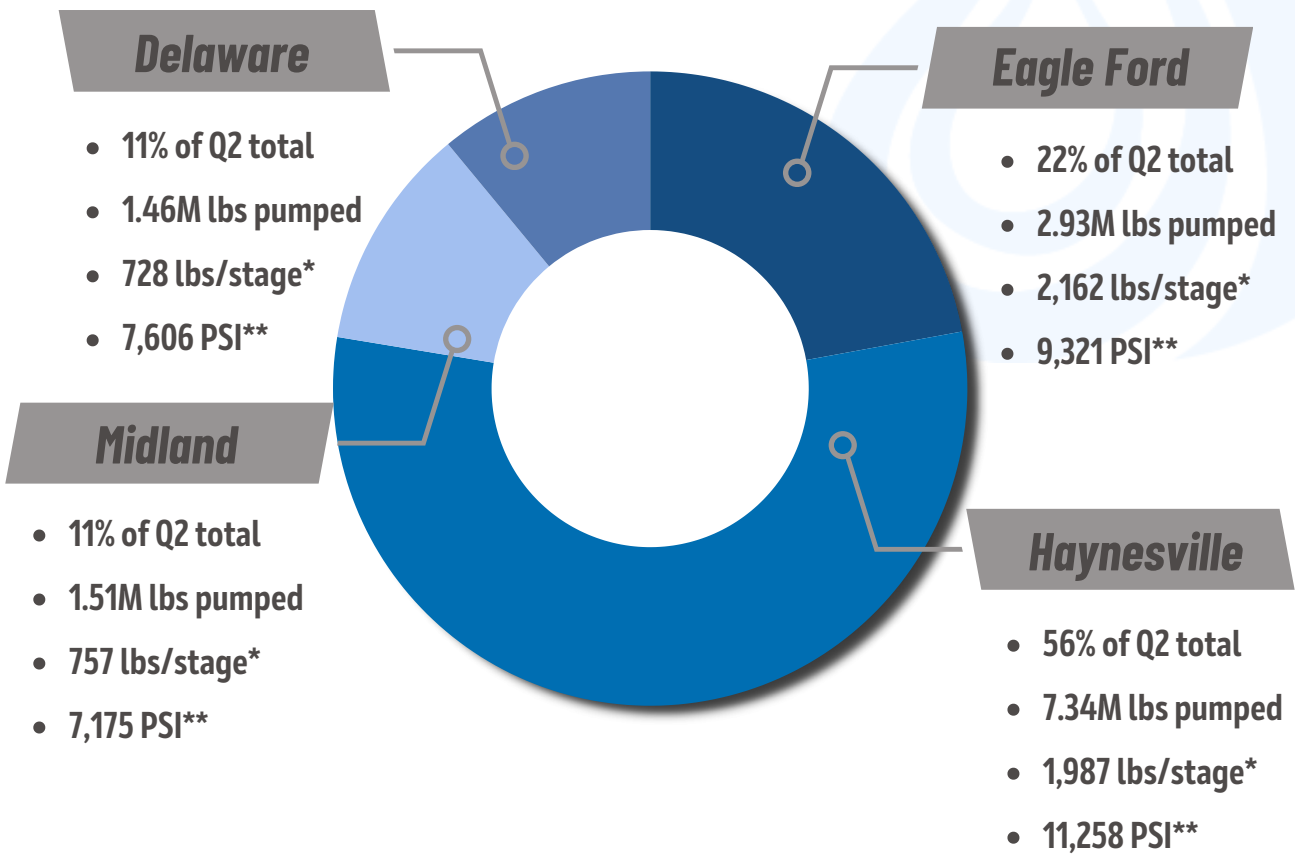
DRIFLOW RUN-TIME EFFICIENCY

99.3%

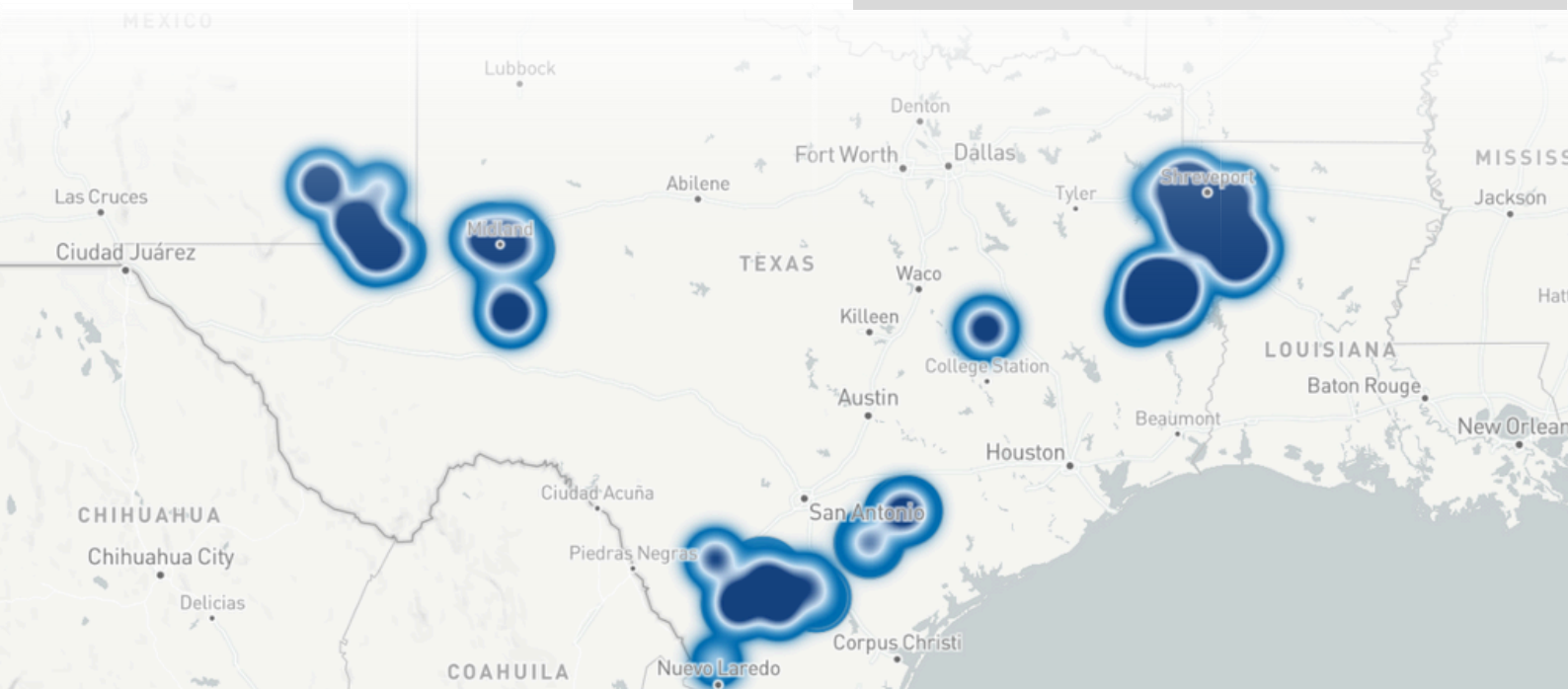
2024 Q3 Monthly Dri Product Consumption



Basin Breakdown



**Average DriFlow pumped per stage*
***Average treating pressure with DriFlow*



Liquid Chemical Performance



LIQUID PRODUCTS PUMPED

116K GALLONS

TOP 3 LIQUID PRODUCTS PUMPED

1

ScaleBlok

2

ClayBlok

3

EnviroSurf



DCS Liquid Chemicals are blended in-house and delivered to the field via the DCS logistics team. Facility inventory storage tanks and field ISO tanks are equipped with solar-powered telemetry systems that allow for accurate inventory monitoring and delivery scheduling.

DCS Liquid Completions Chemicals

Biocides - DDAC and Glut/Quat (Bacteria Control)

ClayBlok™ (Clay Control) • EnviroSurf™ (Surfactant)

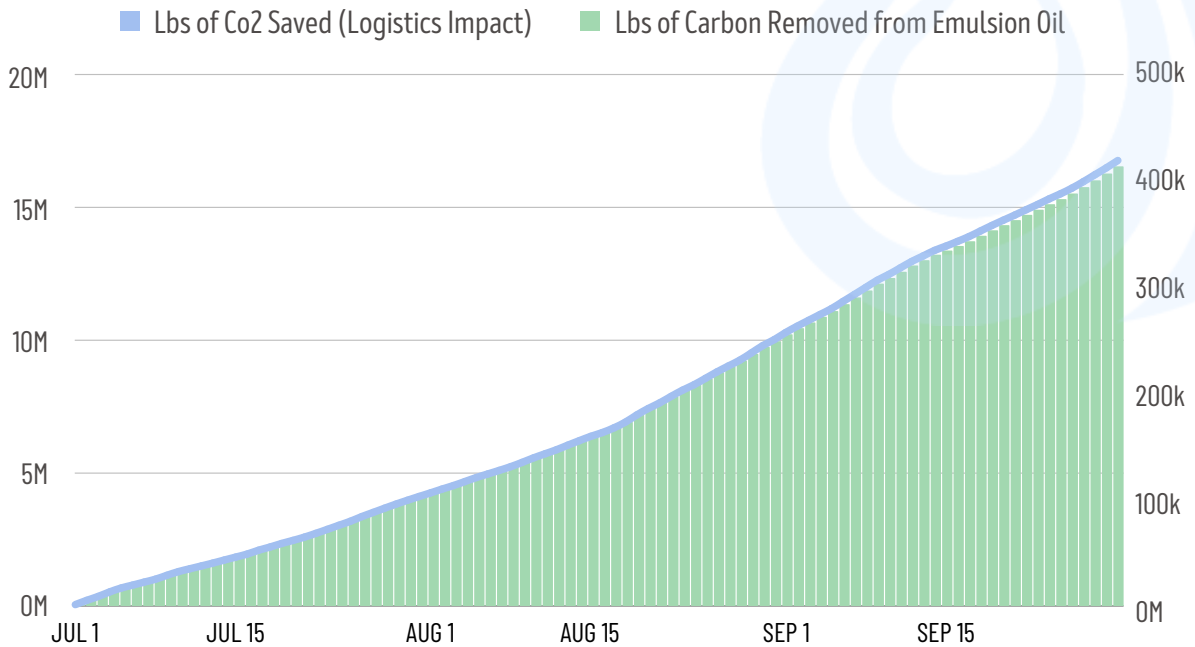
PolyBreak™ (Polymer Control) • ScaleBlok™ (Scale Inhibitor)

Visit our website to learn more about the DCS completions chemistries offered:



ESG Performance

2024 Q3 Carbon Emissions Reduction



Environmental Impact

DCS is committed to providing a premier product and service to our clients. In addition to performance and service quality, the advantage of using DriFlow over traditional liquid FR emulsions is the sustainable operations practices that translate into reduced carbon emissions. The environmental benefit to using

dry friction reducer and guar is evident in the amount of carbon removed in transportation emissions and emulsion oil in just Q4. Furthermore, a fully electric and dust free system makes DriFlow the clear choice for clients focused on achieving their ESG goals without compromising operational efficiency.

LBS CARBON REMOVED
(FROM EMULSION OIL)
16,544,736

LBS CO2 SAVED
(LOGISTICS IMPACT)
419,300

TRIP MILES SAVED
93,178

TRIPS REMOVED
932

AADE Clay Shoot Tournament

The DCS team took to the range in August, sponsoring a station at AADE's annual sporting clay tournament in Dallas. The semi-autonomous DFX unit was staged near our station for folks to check out, displaying the unit's size with a footprint only slightly larger than a golf cart. A huge thank you to AADE for a great event and to our DCS friends and family who joined in on the fun and came out to support!



Sporting Clay Tournament Dallas, TX | August 2024



Serving It Up in East Texas

DCS employees joined the East Texas Food Bank last September to assist in preparing food packages for the mobile pantry distribution. As an organization, we are grateful to have a committed team that promotes excellence in service, not only for our customers but also throughout our local communities. DCS is proud of the men and women within our organization going above and beyond to give back to our friends and neighbors at home. Thank you to the team in Marshall, TX for getting out to fight hunger!



Mobile Pantry Distribution Marshall, TX | September 2024



Business Development

Let DCS provide the right solution for your stimulation chemical needs. For questions or inquiries regarding DCS services, please contact our business development or client support team:



Donnie Golleher
VP of Sales
donnie@stimchems.com



Mike Warren
VP of Commercialization
mike@stimchems.com



Tracey Girouard
Sales Manager - Houston
tracey@stimchems.com



Andrew Bailey
Director of Client Support
andrew@stimchems.com



Dan Hayward
Sales Manager - Midland
dan@stimchems.com



Deseree Rios
Sales Engineer
deseree@stimchems.com



Aaron Hollis
Sales Manager - DFW
aaron.hollis@stimchems.com



Patrick McLain
Sales Engineer
patrick@stimchems.com



DCS

1 Cowboys Way Suite 572, Frisco, TX 75034

469-466-1100 | info@stimchems.com | downholechem.com